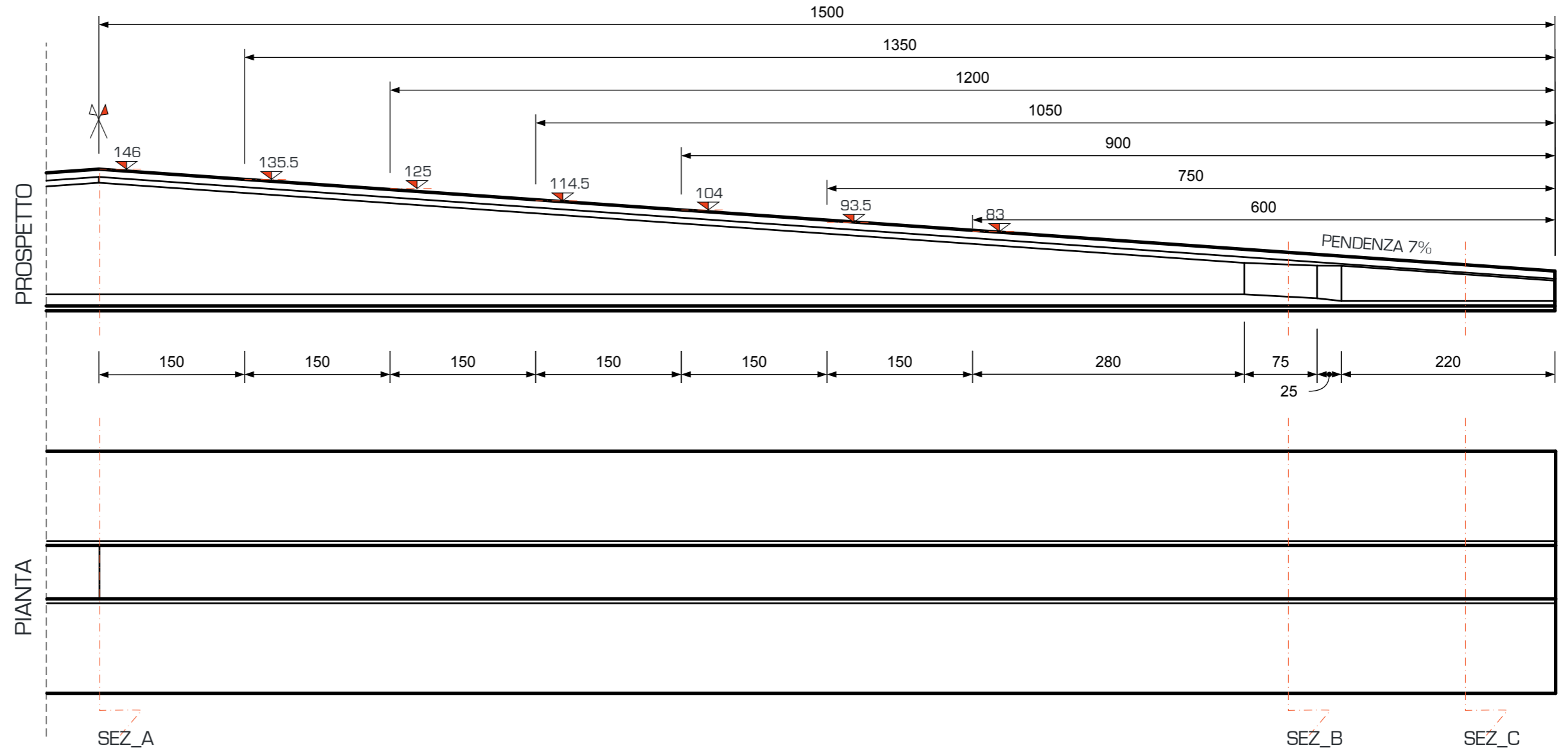
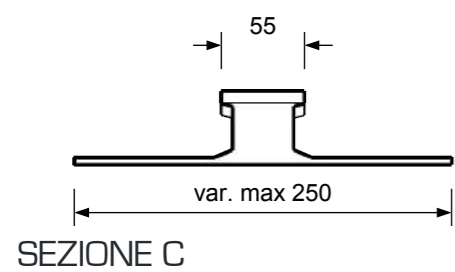
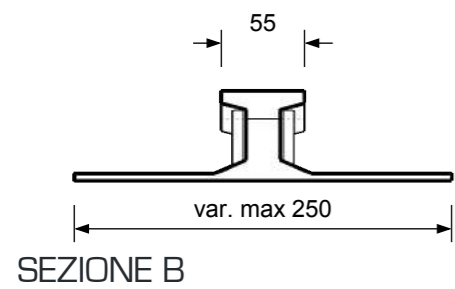
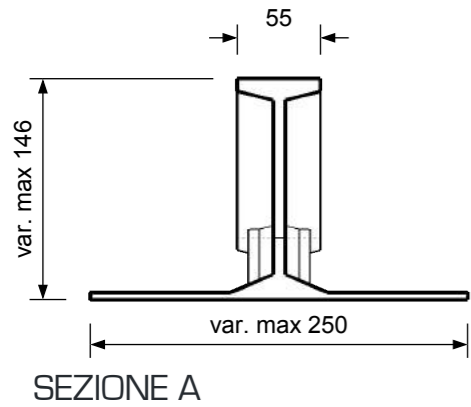
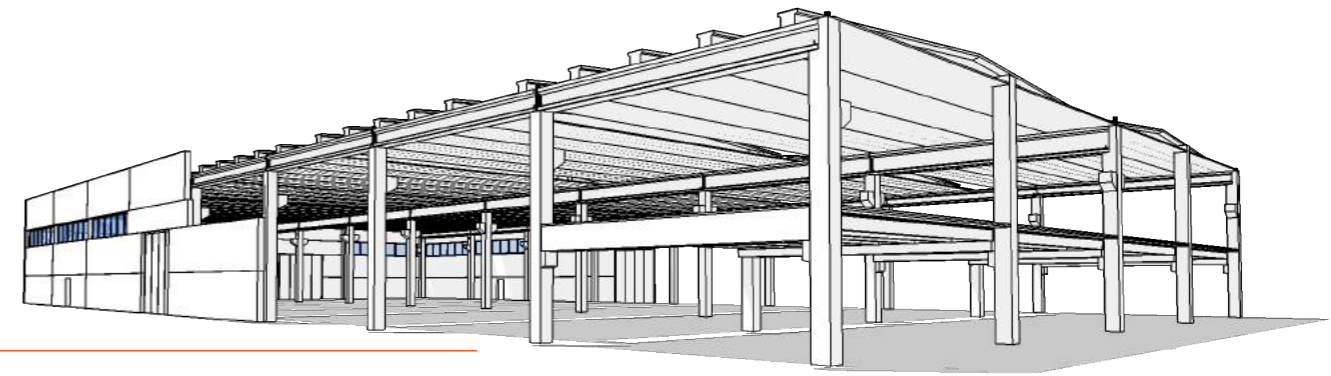


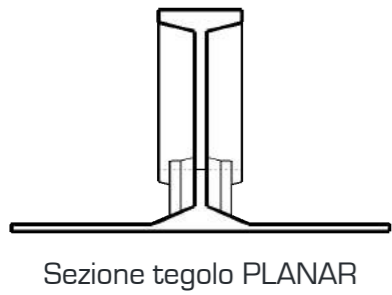
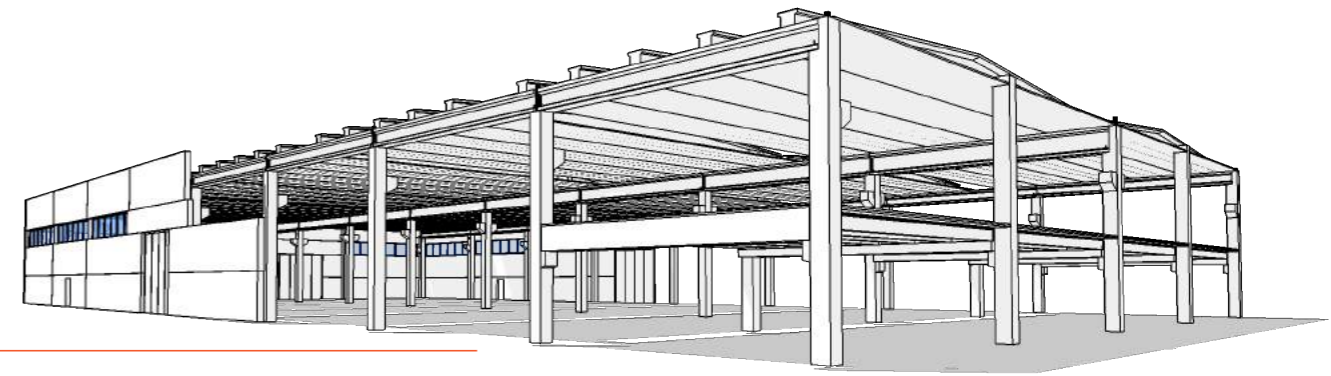
SISTEMA COSTRUTTIVO PLANAR



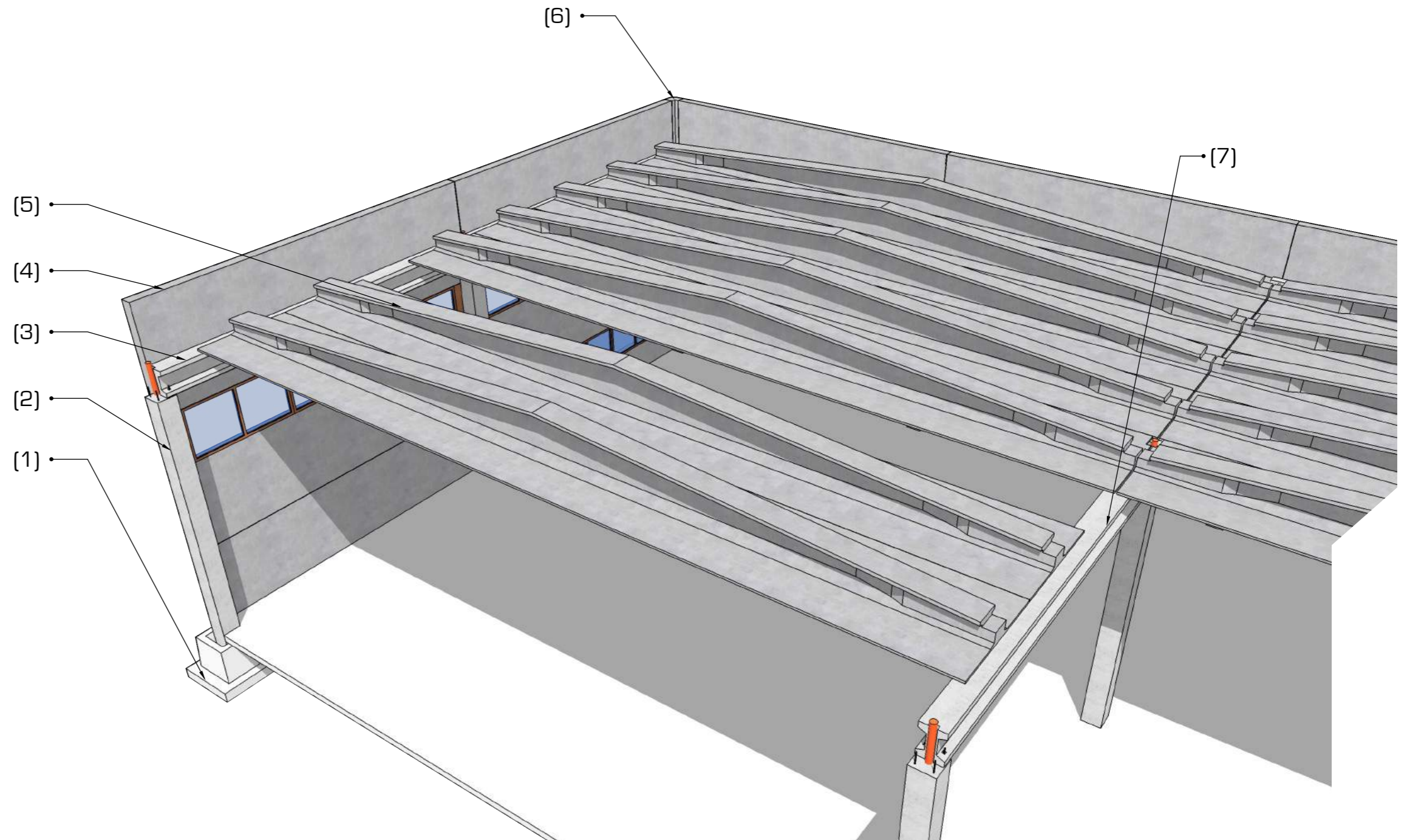
Luci di calcolo [ml]	12 - 30 e oltre
Altezza colmo [cm]	83 - 146
Interasse standard tegoli [cm]	370
Resistenza al fuoco (UNI 9502)	R90' - 120' - 180'

SISTEMA COSTRUTTIVO PLANAR

ELEMENTI STRUTTURALI



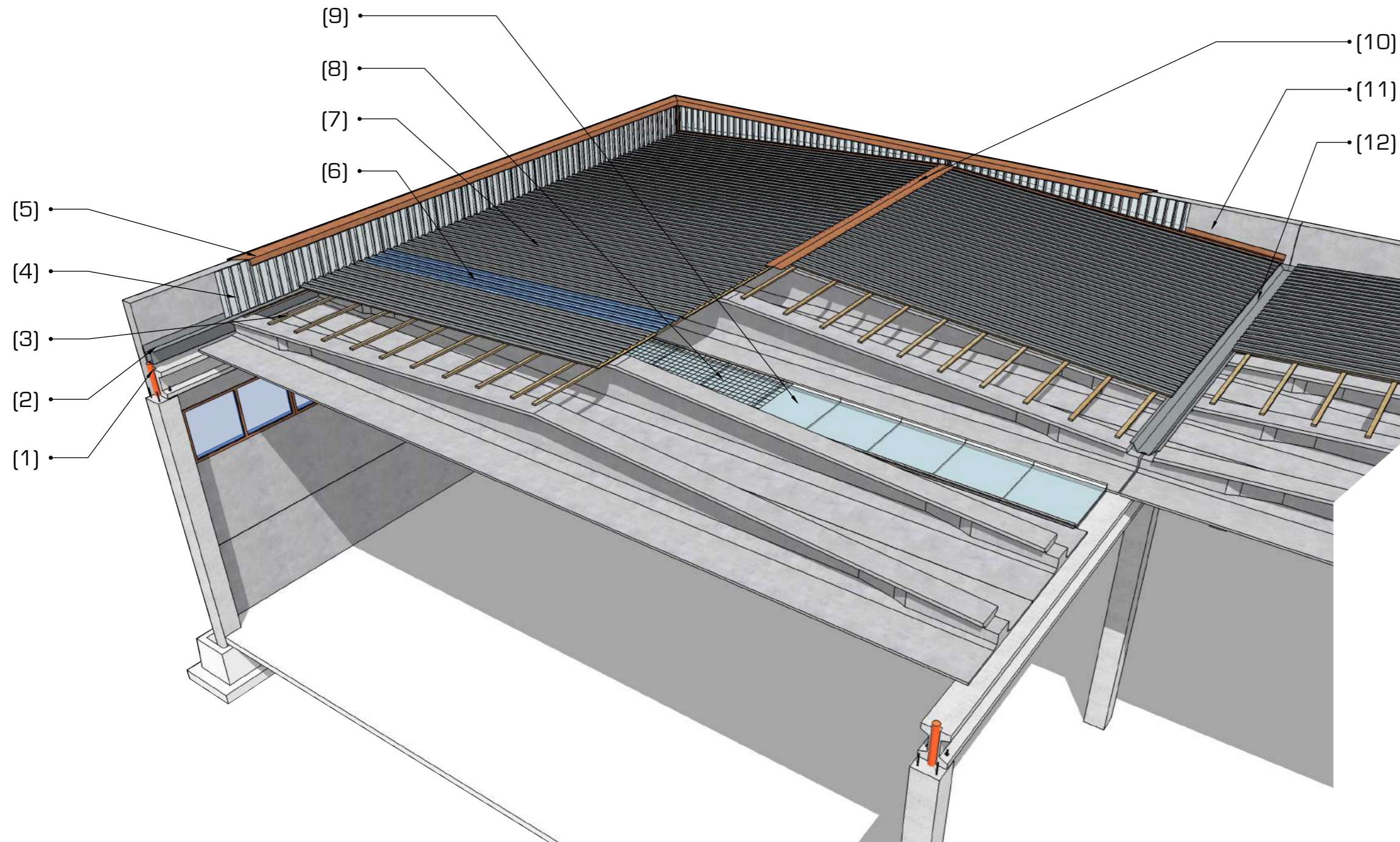
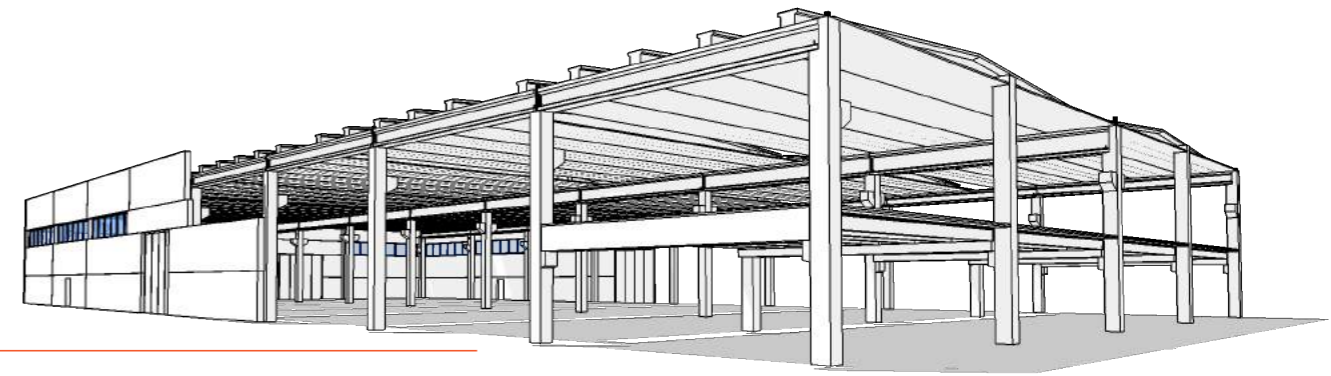
Sezione tegolo PLANAR



- 1) Plinto
- 2) Pilastro
- 3) Trave di bordo tipo IF
- 4) Pannelli di tamponamento
- 5) PLANAR
- 6) Elemento angolare
- 7) Trave interna tipo IF

SISTEMA COSTRUTTIVO PLANAR

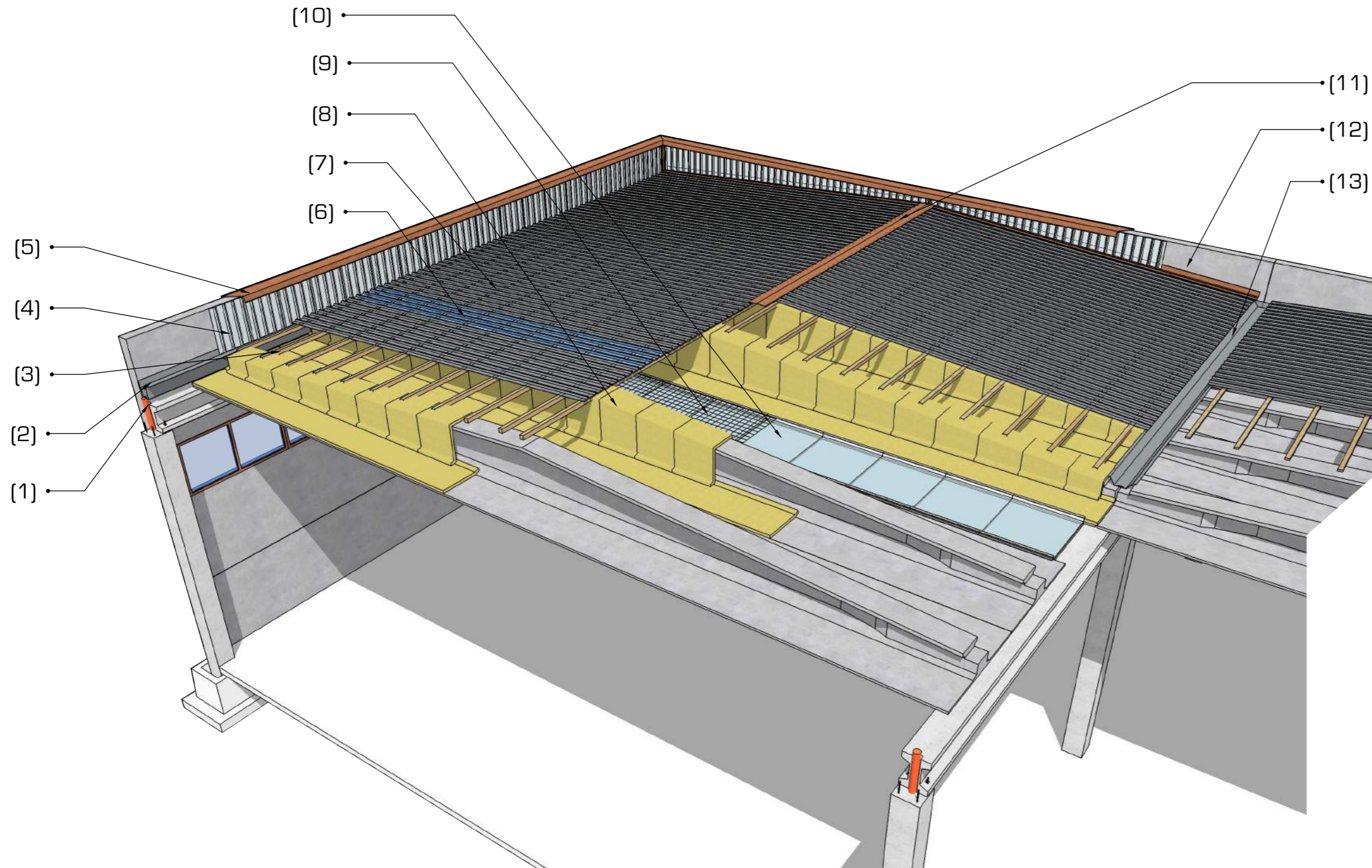
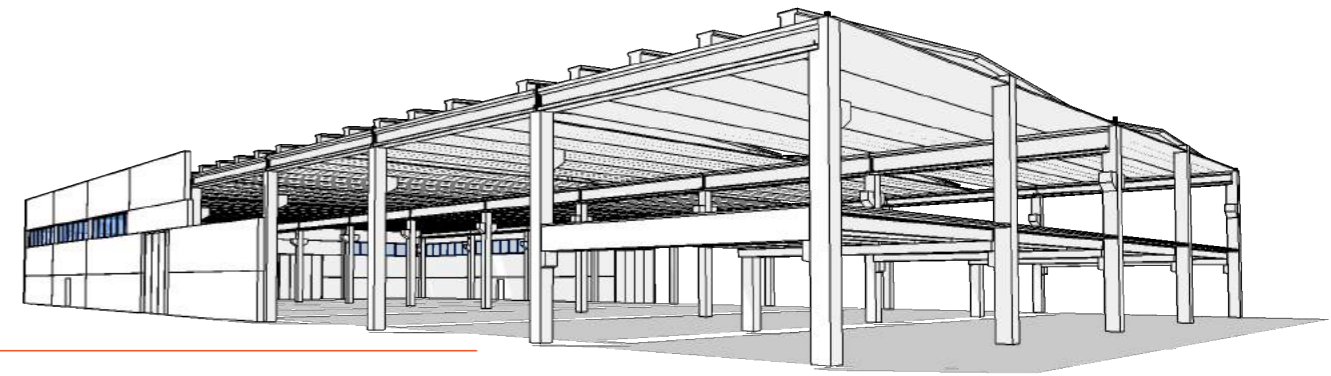
DETTAGLI DI COPERTURA



- 1) Pluviale
- 2) Canale di bordo in lamiera
- 3) Listoni in legno
- 4) Rivestimento verticale in traslucido
- 5) Cappellotto perimetrale in lamiera preverniciata
- 6) Lastra di copertura trasparente
- 7) Pannelli sandwich coibentati in lamiera grata
- 8) Rete metallica plastificata anticaduta
- 9) Lastra di velario in policarbonato
- 10) Colmo in lamiera preverniciata
- 11) Scossalina di testata in lamiera preverniciata
- 12) Canale di convergenza in lamiera

SISTEMA COSTRUTTIVO PLANAR

DETTAGLI DI COPERTURA



- 1) Pluviale
- 2) Canale di bordo in lamiera
- 3) Listoni in legno
- 4) Rivestimento verticale in traslucido
- 5) Cappellotto perimetrale in lamiera preverniciata
- 6) Lastra di copertura trasparente
- 7) Lastre grecate in lamiera
- 8) Materassino isolante in lana di vetro
- 9) Rete metallica plastificata anticaduta
- 10) Lastra di velario in policarbonato
- 11) Colmo in lamiera preverniciata
- 12) Scossalina di testata in lamiera preverniciata
- 13) Canale di convera in lamiera